

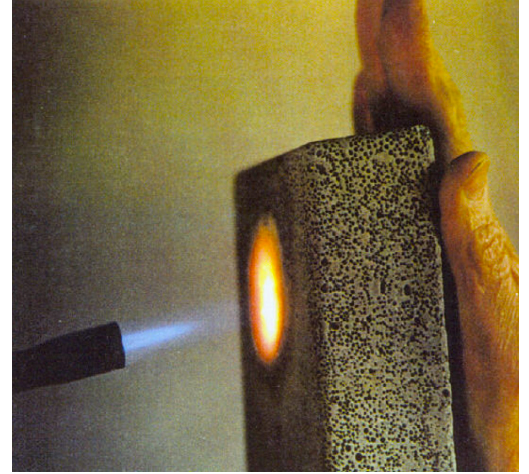
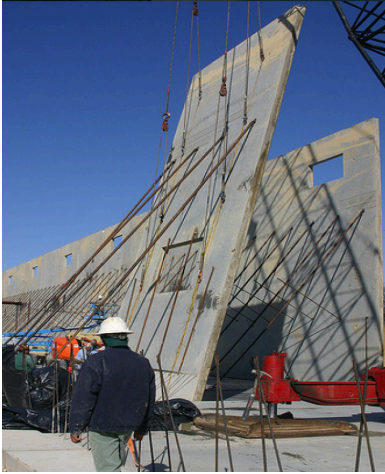
STRONGKOR BUILDING TECHNOLOGY

The Future - Now



Eagle Ridge Fort McMurray Alberta Canada

PANEL SYSTEM

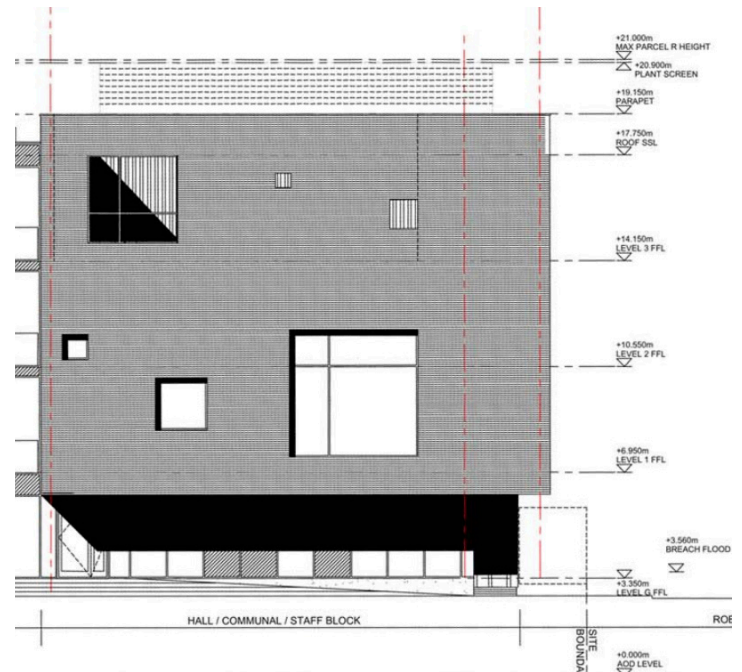


HORIZONTAL STAGE 1

- Prepare form area with liners for embossed surface finishes. Panels are cast inverted, install slab inserts for plumbing, etc.
- Tension cables over form area.
- Connect post-tension conduits to cables.
- Suspend mesh grid forms over cables and conduits.
- Inject forms with specialized concrete formula.
- Curing and magnetic induction alignment completes STAGE 1.

VERTICAL EXTERIOR

- Prepare form area with embossing liners.
- Install pre-frames for windows and doors.
- Install pre-tensioned reinforcing mesh with reinforcing links and opening supports.
- Cast exterior wall skin and spray on glue sealer.
- Install shaped rigid insulation.
- Install pre-tensioned cables, ladder and mesh.
- Install post-frames for windows and doors.
- Cast interior wall skin and roller surface.
- Cut panels to size, machine edges and color.
- Reusable rib forms set into form area.
- Install pre-tensioned cables, ladder and mesh.
- Install frames for windows and doors.
- Cast interior wall skin and roller surface.
- Cut panels to size, machine edges and color.
- All panels, both exterior and interior, are labeled, wrapped and shipped.



PANEL INSTALL

- With the horizontal and vertical panels complete and ready for installation, they are assembled in order and shipped appropriately to the site.
- Craned into place, the panels are connected together by specifically designed concealed panel connectors and post-tensioned cables.
- The integration of these panel systems will provide a quality construction with an almost completely finished project upon delivery.

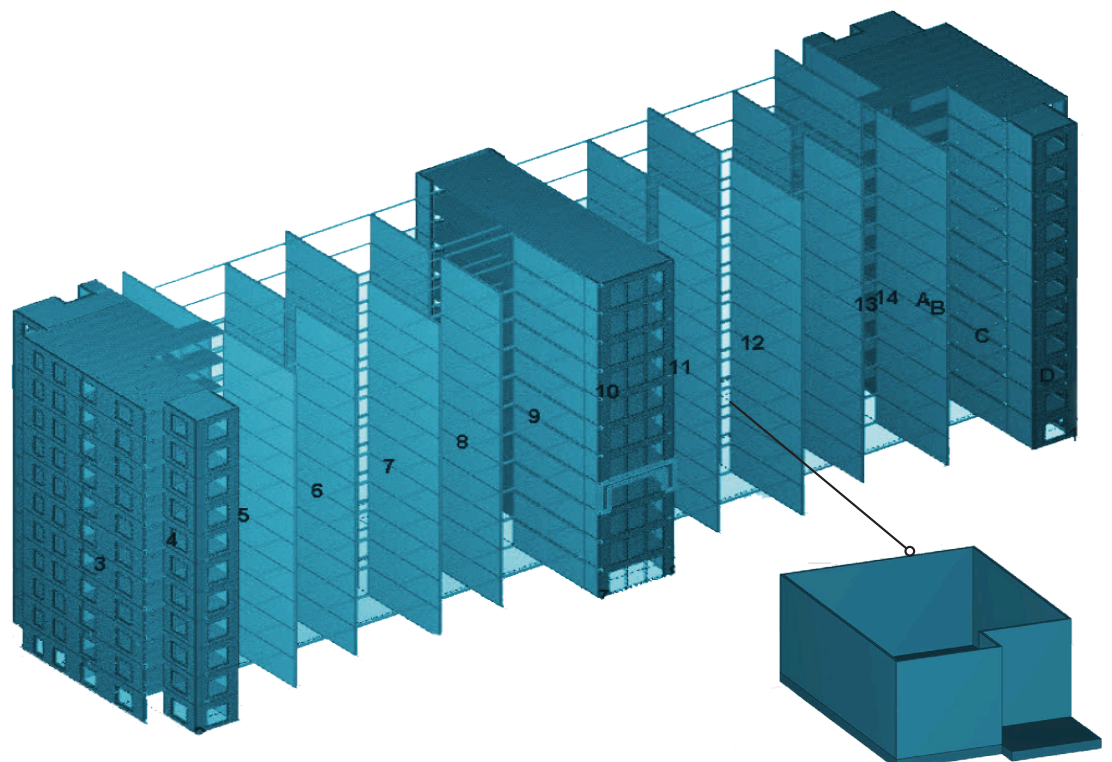
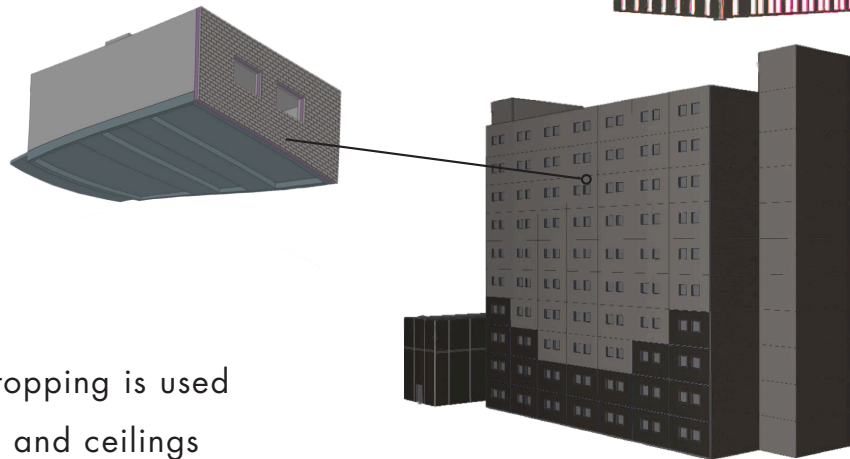
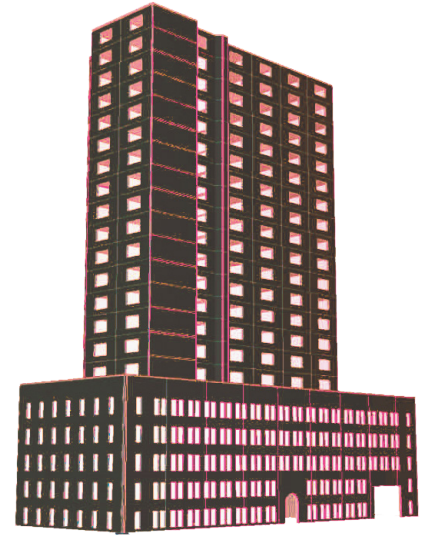


STACK SYSTEM

- Our modular stacking system is suitable for projects up to 50 meters in height.
- We use our horizontal panel system with up to four vertical wall panels, bulkhead beams and temporary braces for each stacking unit.
- Each unit is fully finished with mechanical, electrical, fixtures and appliances in the factory.
- To complete the structure, we incorporate a modified version of our horizontal panel system to make a modular roof panels.

STACK INSTALL

- Foundations prepared for stacking units.
- Units craned from above to interlock with each other. This includes stair and elevator cores.
- Blank end walls are interlocked with exterior wall panels and are then insulated.
- At corridors, concrete topping is used to connect units. Floors and ceilings finished.
- Modular roof panels are installed at top level.
- Fire stopping, sealants and trims are installed to complete project.

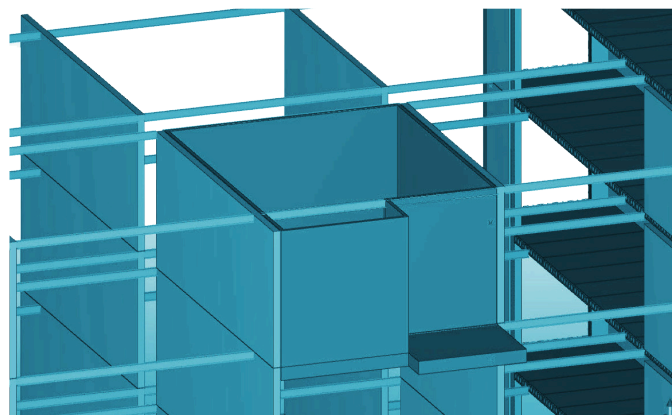
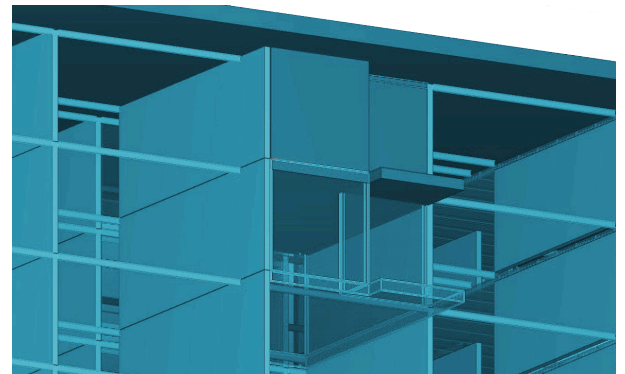
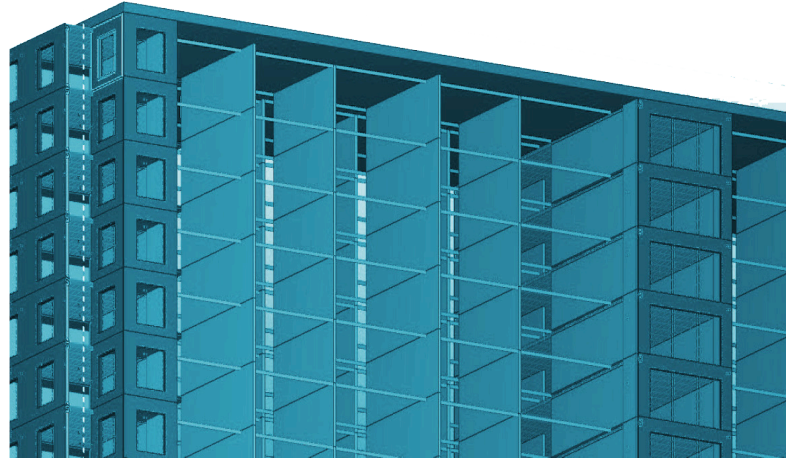


SPACE FRAME

- Our most advanced system, allows larger free spaces without any practical height limitation.
- Horizontal floor panel secured to space frame.
- Each unit is fully finished with mechanical, electrical, fixtures and appliances in the factory.

These units are wrapped and shipped with other units such as:

- Stacking units for stairs and elevator cores.
- Panel pieces for structure, roofs and open spaces.
- Trims and miscellaneous pieces.
- The structure is built to the roof, with temporary braces (shown in green on the attached drawing) to help stabilize the open structure.
- Slide-in space frame units installed to structure when structural 'skeleton' completed to roof.
- Concrete topping is installed at corridors and common spaces for additional stability.
- Corridors and common space ceilings and floors.
- Fire stopping, sealants and trims are installed to complete project.



USA enquiries contact:

Ken King President

Email: president@strongkor.com

Tel: **+1 (403) 383 0330** (Can)

For enquiries outside USA contact:

Aengus RM Fogarty Vice President

Email: arfogarty@strongkor.com

Tel: **+1 778 678 0102** (Can)

+420 608 372 264 (Cz)